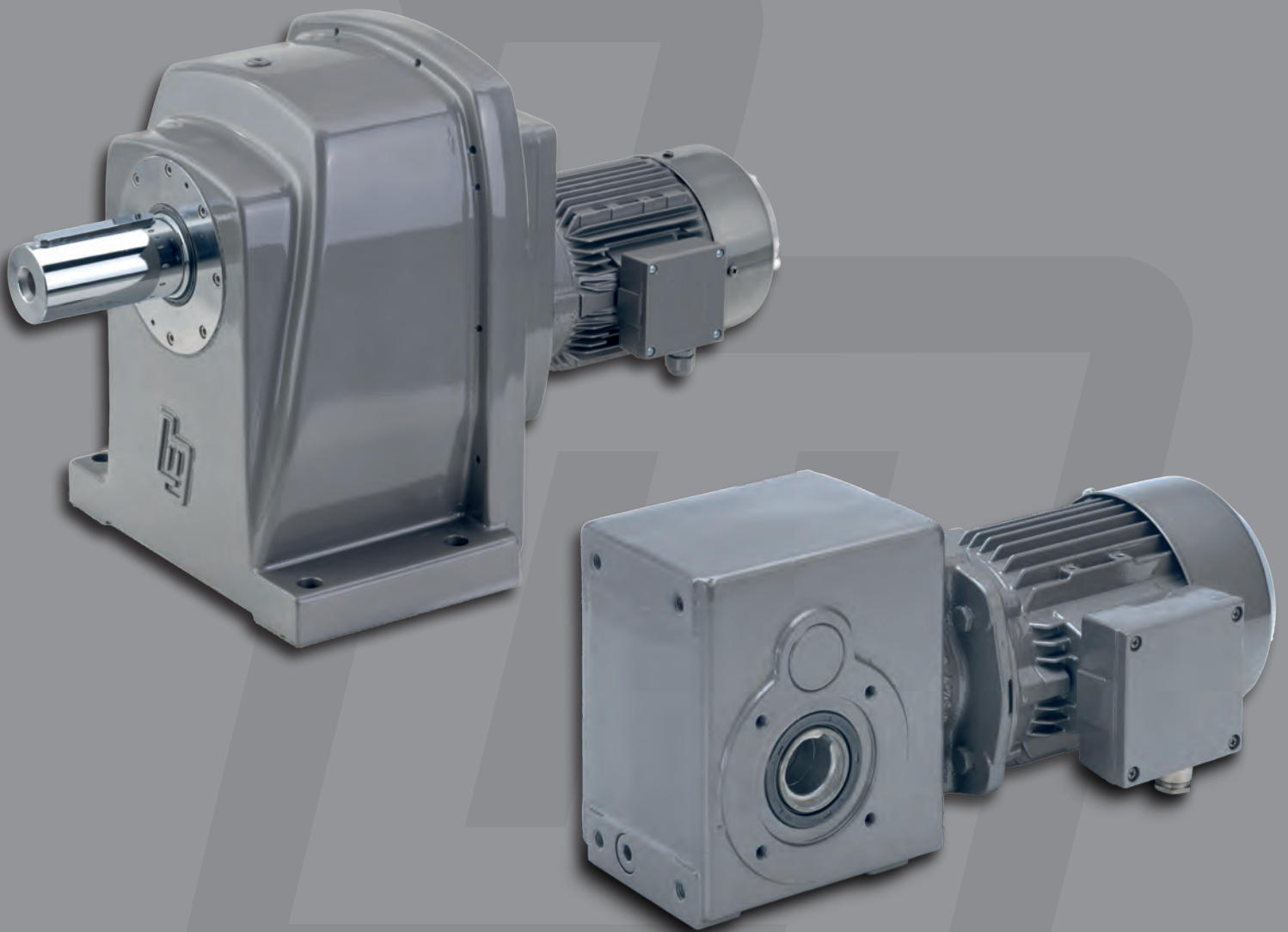




**STRÖTER**  
*Powered by* **BEGE**



# ***COMPANY BROCHURE***

**BEGE** Power Transmission

[www.bege.nl](http://www.bege.nl)

### About BEGE

BEGE Power Transmission was founded in 1950 as a wholesale company for drive technology and developed its first helical gear motor series in the early 1980's. This gear unit has evolved into a proven and reliable solution for power transmission.

Nowadays, BEGE's range of products comprises of hypoid, bevel and (mini) helical gear units (available in cast iron and stainless steel) and MIG encoders. BEGE has also introduced its own stainless steel (INOX) motors to complement the stainless steel gear unit series.

### Development

With the acquisition of the sales activities of LAT Trommelmotoren BV and the sales and production activities of STRÖTER Antriebstechnik GmbH, we can offer comprehensive solutions for industrial automation.

We build long-lasting partnerships with renowned manufacturers in the drive technology sector to complement our own product series.

### Your partner in drive technology

Since its founding, BEGE has developed a proven record of reliability and success. Our dealer network ensures local assistance, fast communication and efficient support to optimally serve each individual customer. Our customers make use of our wide range and large stock of customer specific products and solutions.

With our team of 50 employees, we are ready to best serve our customers with advice, products and service. We strive for continuous improvement in quality excellence and great customer satisfaction while being your partner in drive technology.

## Our Stainless Steel (INOX) Gear Motors and Encoders:



### Stainless Steel (INOX) AC Motors

- Output power from 0.18 to 1.5 kW (2-4-6- and 8-poles)
- Voltage of 230 / 400V 50Hz or 265 / 460V 60 Hz
- Shaft diameter from 11 to 24 mm
- IE3 Premium Efficiency – IEC size 63 to 90
- All stainless steel AISI 316 (1,4404) with smooth surface for easy cleansing
- TENV (without cooling fan) with completely closed terminal box
- IP69K with special one-way membrane pressure valve
- Reduced motor temperature due to the use of high-quality materials
- Built-in thermal switch (bimetal)



### Stainless Steel (INOX) Helical Gear Motors

- Gear ratio from 8.0:1 to 431:1 (2- and 3- stage reduction)
- Torque from 10 to 300 Nm
- Output power from 0.18 to 1.5 kW
- Shaft diameter from 25 to 30 mm
- IEC size 71 to 90
- High efficiency – hardened and grinded gears
- Completely sealed housing without breather plug – all seals are FDA approved
- Standard no-tox lubrication – FDA H1 approved
- Foot- or flange-mounted version



### Stainless Steel (INOX) Helical Bevel Gear Motors

- Gear ratio from 7.1:1 to 179:1 (3-stage reduction)
- Torque from 10 to 650 Nm
- Output power from 0.18 to 1.5 kW
- Shaft diameter from 25 to 45 mm
- IEC size 71 to 90
- High efficiency – hardened and grinded gears
- Completely sealed housing without breather plug – all seals are FDA approved
- Standard no-tox lubrication – FDA H1 approved
- Foot- or flange-mounted versions, also available with torque arm



### MIG Encoders

- Incremental magnetic impulse generator (MIG NOVA+)
- 7, 9, 12 and 15 mm flange thickness – very compact construction
- Flange diameter from 80 to 450 mm – assembly to all existing IEC motors
- 1 to 2,048 impulses
- Signal output A 90° B and inverted
- Epoxy sealed electronics
- Available in aluminium and stainless steel
- IP67 protection class when mounted between motor and gear unit
- Patented vulcanized magnetic ring on a stainless steel hub with tolerance ring

## Our Gear Motors:



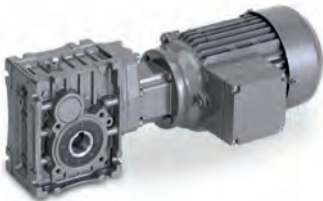
### Mini Helical Gear Motors

- Gear ratio from 6.0:1 to 2,256:1 (2-3-4-5- and 6-stage reduction)
- Torque from 3.9 to 40 Nm
- Output power 0.09 kW
- Shaft diameter from 12 to 16 mm
- IEC size 56 – extremely compact design
- High efficiency – optimized and hardened gears



### Helical Gear Motors

- Gear ratio from 3.7:1 to 2,685:1 (2-3- and 4-stage reduction)
- Torque from 35 to 2,590 Nm
- Output power from 0.09 to 22 kW
- Shaft diameter from 18 to 75 mm
- IEC size 56 to 180 – compact design
- High efficiency – hardened and grinded gears
- Available with free input shaft, (brake or IEC) motor mounting and forced cooling



### Hypoid Gear Motors

- Gear ratio from 7.5:1 to 300:1 (2- and 3-stage reduction)
- Torque from 6 to 500 Nm
- Output power from 0.12 to 4 kW
- Shaft diameter from 20 to 40 mm
- IEC size 56 to 112
- High efficiency – hardened and grinded gears
- Gleason spiral bevel gears



### Helical Bevel Gear Motors

- Gear ratio from 3.7:1 to 180:1 (2- and 3-stage reduction)
- Torque from 2.9 to 1,250 Nm
- Output power from 0.12 to 15 kW
- Shaft diameter from 25 to 60 mm
- IEC size from 63 to 160
- High efficiency – hardened and grinded gears
- Assembly to all existing IEC-motors possible
- Available with hollow or solid shaft



### Variable Speed Gear Motors

- Speed range 1:10
- Output speed from 0.01 – 0.1 rpm to 250 – 2,500 rpm
- Torque from 0.4 to 2,590 Nm
- Output power from 0.045 to 1.5 kW
- Shaft diameter from 12 to 75 mm
- IEC size 56 to 90
- Available with helical and helical bevel transmission
- Compact design and completely sealed housing
- Durable solid steel control system for high efficiency

## Corporate Social Responsibility



- ↳ **Highly energy efficient gear motors**
- ↳ **Re-use of materials, reducing consumption of paper, cardboard & waste**
- ↳ **Active policy on the contribution of our suppliers with respect to the environment**
- ↳ **Sponsor of sporting activities & charities**

## Our partners and their products:



### Drum Motors



- 12 drum diameters from 60 to 800 mm
- Drum length from 200 to 2,000 mm (depending on drum diameter)
- Output power from 0.03 to 132 kW
- Speed from 0.03 to 4.5 ms<sup>-1</sup>
- Available in stainless steel and IP67 protection class
- With brake and/or backstop
- Drums can be supplied with rubber coating, cold glued or hot vulcanized
- (No-tox) oil filled for long-lasting cooling and lubrication



### Bevel, Worm & Hypoid Gear Units



- Gear ratio from 1:1 to 6:1, 5:1 to 83:1 and 8:1 to 15:1
- Maximum torque from 5,400 Nm, 13,720 Nm and 2,887 Nm
- Gear unit size with edge lengths from 35 to 350 mm, 40 to 250 mm and 90 to 260 mm
- Low-backlash construction | < 6 angular minutes possible
- Standard dimensions/shaft diameters directly available from stock
- All gear units also available as servo (precision) version
- Bevel gear unit (V-series) also available in stainless steel (HDV-series)



### Frequency Inverters, PLC & HMI



- Output power from 0.37 to 450 kW
- Voltage of 1-phase 200 – 230 V, 3-phase 200 – 230 V and 3-phase 380 – 460 V
- Built-in EMC filter (from 0.37 to 45 kW)
- Energy efficient due to intelligent design and monitoring
- IP20 protection class, optional IP66
- Safety Function; Safety Torque Off (STO)
- HMI with touch screen from 4.3" to 10.2" – bright colour screen
- PLC's in all power classes – for efficiently managing your automation system
- Free programming software



### Worm, Parallel & Planetary Gear Units



- Maximum torque from 4,800 Nm, 10,500 Nm and 4.5 million Nm
- Worm gear units also available with torque limiter
- Parallel gear units (Type P) also available with long center distance (Type PL)
- Planetary gear unit (Type EX) also available with bevel transmission (Type EXB)
- IEC-motor mounting possible
- Compact design, shock resistant and extremely powerful design for heavy duty applications
- Industry-specific gear unit with extensive application areas including cooling towers, cranes, elevators, mixers and mining



### Vibration Motors



- Output power from 0.024 to 18 kW (2-4-6- and 8-poles)
- Centrifugal force from 440 to 245,000 N
- Standard IP66 protection class
- Standard range in compliance with ATEX 2014/34/EU
- Directive for combustible dust atmospheres, zone 21 and 22 category II/2D, tD A21 IP66
- Weights regulation system with indicator from 0 to 100% for easy adjustment of the centrifugal force

## Other products directly available from stock:

BEGE worm gear motors

IEC AC-motors

Gears & racks

Chains & sprockets in stainless steel, steel & plastic

Side guide solutions, frame & structure support

Torque limiters, couplings & clamping elements

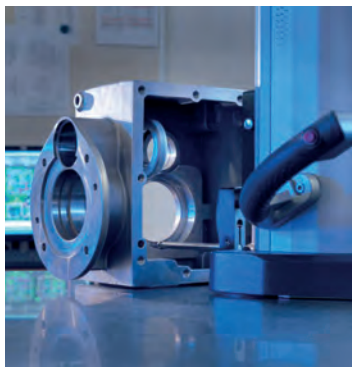
Bearing housings in stainless steel, steel & plastic

Machine levellers available in many versions



### **Customized drive technology**

Customized by our own professional team for any specific need or application. All mounting positions, optional shaft diameters, options and special versions on request.



### **Fast delivery from stock**

Large stock of customer specific products

- 4.000 m<sup>2</sup> warehouse
- 25.000 products in stock



### **Extensive dealer network**

Our dealer network guarantees local assistance, fast communication and efficient processing of your purchases. Our network is expanding to several other countries. Current information about our dealer network can be found on our website [www.bege.nl](http://www.bege.nl)





***BEGE Power Transmission***

Anton Philipsweg 30

2171 KX Sassenheim

The Netherlands

T: +31 252-220 220

F: +31 252-218 484

E: [bege@bege.nl](mailto:bege@bege.nl)

W: [www.bege.nl](http://www.bege.nl)

